

## Painting scheme for Nu-FORTE Barrier

### Mixing ratio

2 comp. (Base+converter)
3kg set (Base : 2kg • converter : 1kg)

### Pot life

5°C	20°C	30°C
3hrs.	1hrs.	30min.

### Film thickness

DFT	2,000µm
WFT	2,000µm
Theoretical coverage	3.10kg/ m <sup>2</sup>

### Coating interval

	5°C	20°C	30°C
MIN	48hrs.	16hrs.	8hrs.
MAX	7days	7days	7days

## Recommend tools preparation for Nu-FORTE Barrier application



Scraper (small)



Trowel



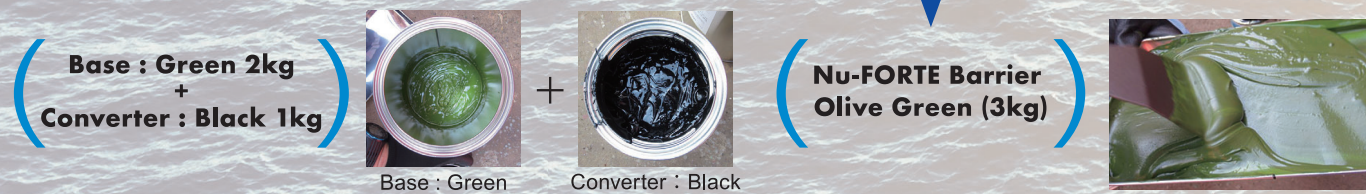
Brush



Power tool

## How to prepare Nu-FORTE Barrier

Excellent performance of Nu-Forte Barrier by mixing base and converter. No thinner is needed.



Long lasting, high build, solvent-free epoxy anticorrosive paint

# Nu-FORTE Barrier

Providing a ground-breaking anticorrosive painting system for ship



## KANSAI PAINT MARINE CO.,LTD.

### Sales Division :

Taiyo-Life Shinagawa Bldg. 9F, 2-16-2, Konan, Minato-ku,  
Tokyo 108-0075, Japan  
Phone : +81-3-6758-2210 Facsimile : +81-3-6758-2213  
Web Site : www.kp-marine.co.jp

Contact :

KANSAI PAINT MARINE CO.,LTD.

Long lasting, high build, solvent-free epoxy anticorrosive paint

# Nu-FORTE Barrier

To provide a safe anticorrosive which prevents corrosion such as welding part of ballast tank or joint part of fittings on the deck.

2000µm epoxy coating maintains long-term durability !

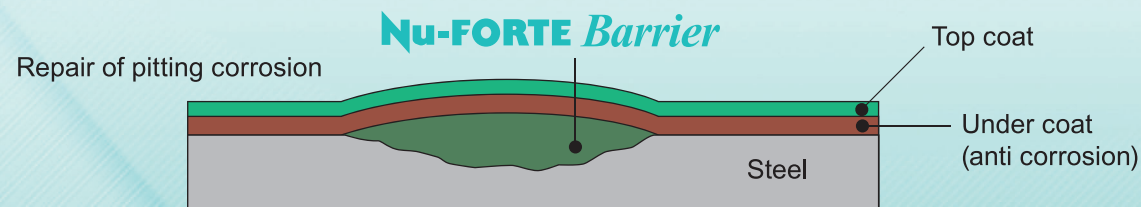
## Feature of Nu-FORTE Barrier

- Suitable for partial repair of area with significant corrosion
- Can be applied to wet surface
- Hard film of epoxy resin
- Non-solvent epoxy coating material
- Easy handing with small package (3kg set)



Nu-FORTE BARRIER is ideal for repair of parts in above

## Cross section view of area repaired with Nu-FORTE Barrier



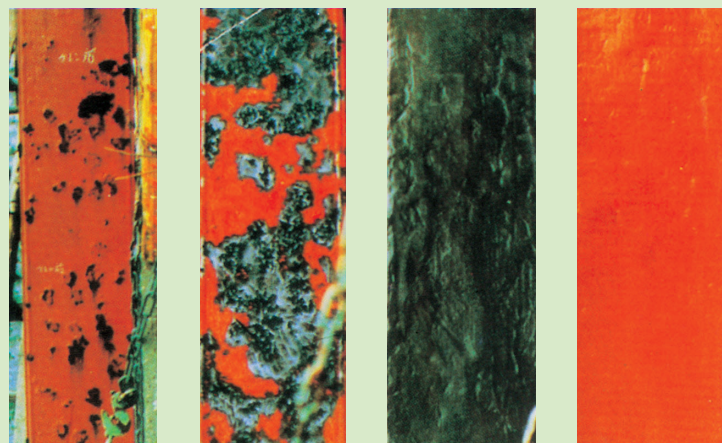
## Field test of reinforcement coating on offshore bridge truss. (84months)

Locaion : Estuary of the Tone River in Choshi City, Chiba

Surface preparation : St2 (ISO 8501-1)

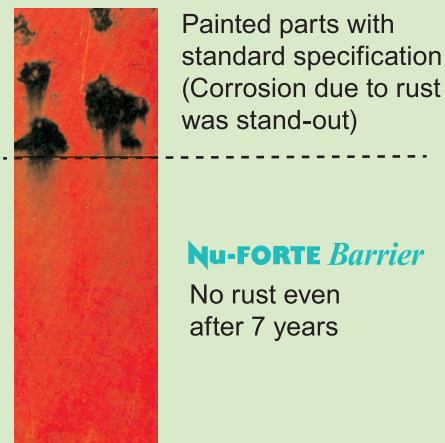
Specification : Modified epoxy paint~Reinforce coating (Nu-FORTE Barrier)~Chlorinated rubber paint.

### Condition after application



Before surface preparation    After surface preparation    Nu-FORTE Barrier After application    After application Chlorinated rubber paint

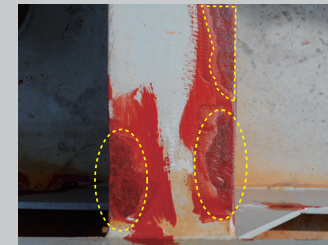
### Condition after 7 years



**Nu-FORTE Barrier**  
No rust even after 7 years

## Example of Nu-FORTE Barrier application

### Repair with general epoxy AC



Scraped area is not covered

### Application example & feature of Nu-FORTE Barrier



Thick film of Nu-FORTE Barrier easily to cover the gap after surface preparation

### Repair with Nu-FORTE Barrier



Surface preparation

After application

Before application

After application

## Surface preparation for painting

